

Fighting

Female Genital Mutilation



with
Maps





FGM

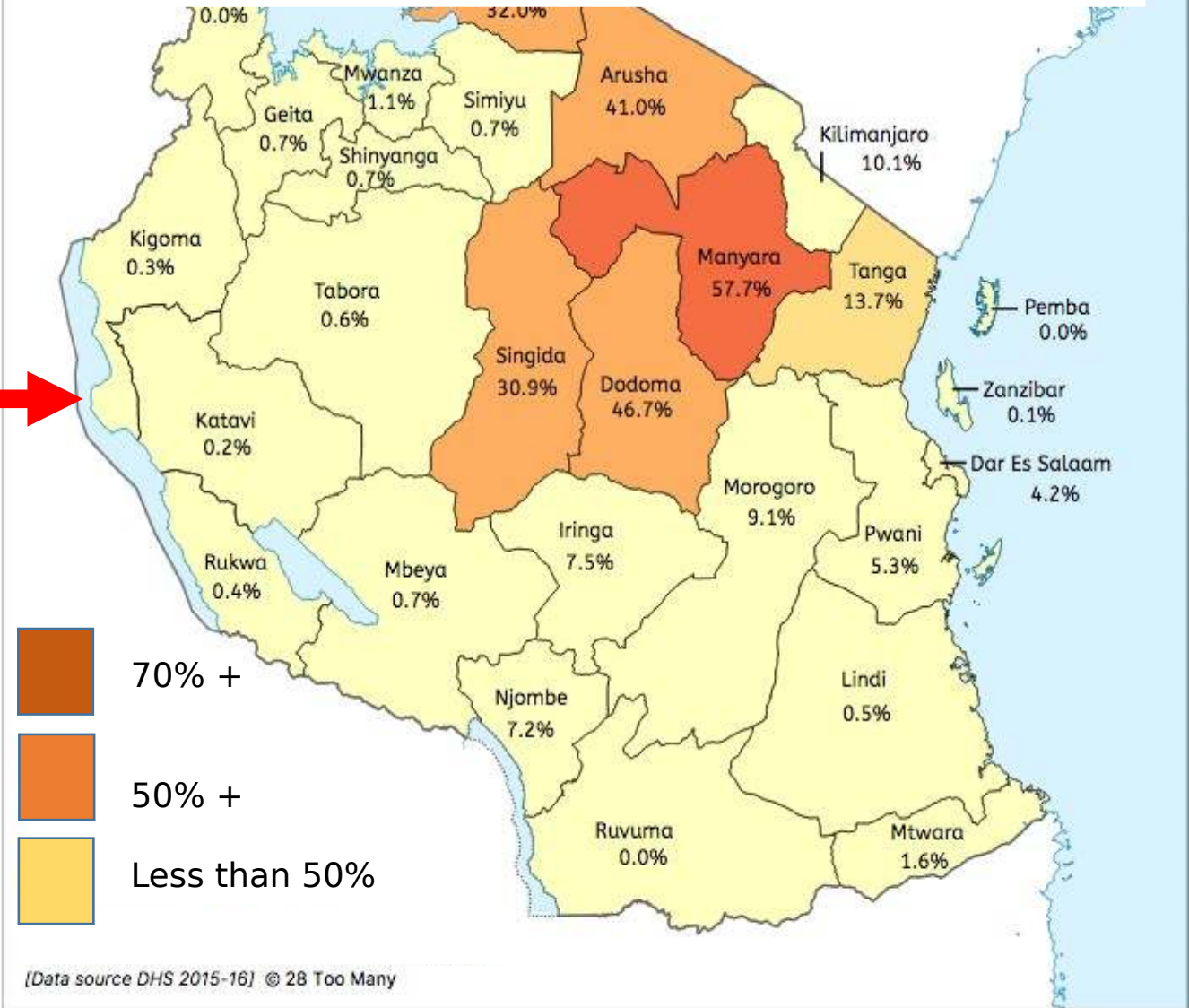


The cutting of female genitalia for cultural or religious reasons:

- Type 1: partial or total removal of the clitoris
- Type 2: as Type 1 with additional removal of the labia minora and often the labia majora
- Type 3: re-arrangement of the genitals to narrow the vaginal opening
- Type 4: all other procedures (pricking, piercing, incising, scraping and cauterizing)



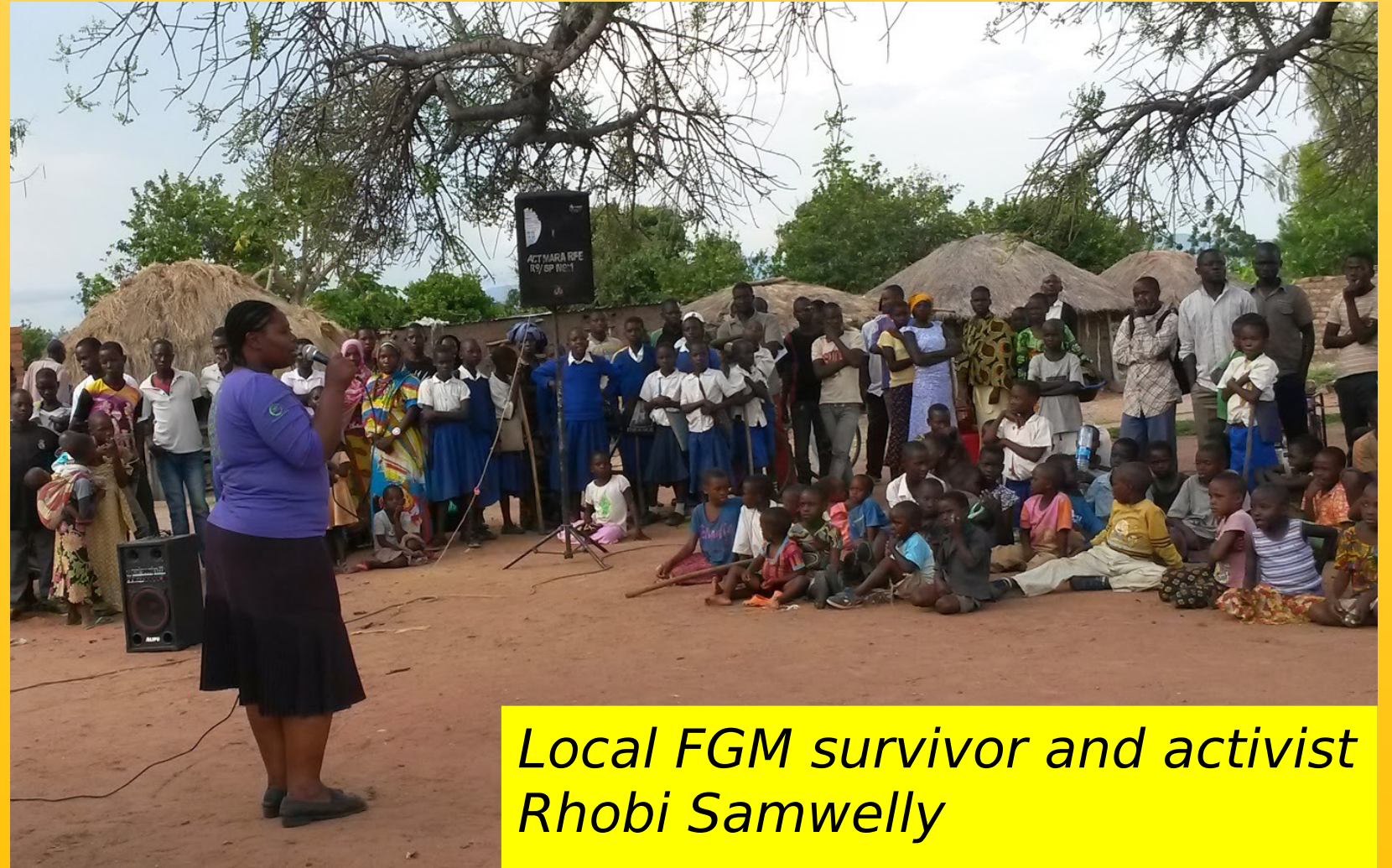
FGM Prevalence in Tanzanian Women and Girls 2016



Girls are rounded up during the 'Cutting Season' when they are on school holidays.

The Tanzania Development Trust supports:

- Local Activists
- Outreach work
- Safe Houses



Local FGM survivor and activist Rhobi Samwelly

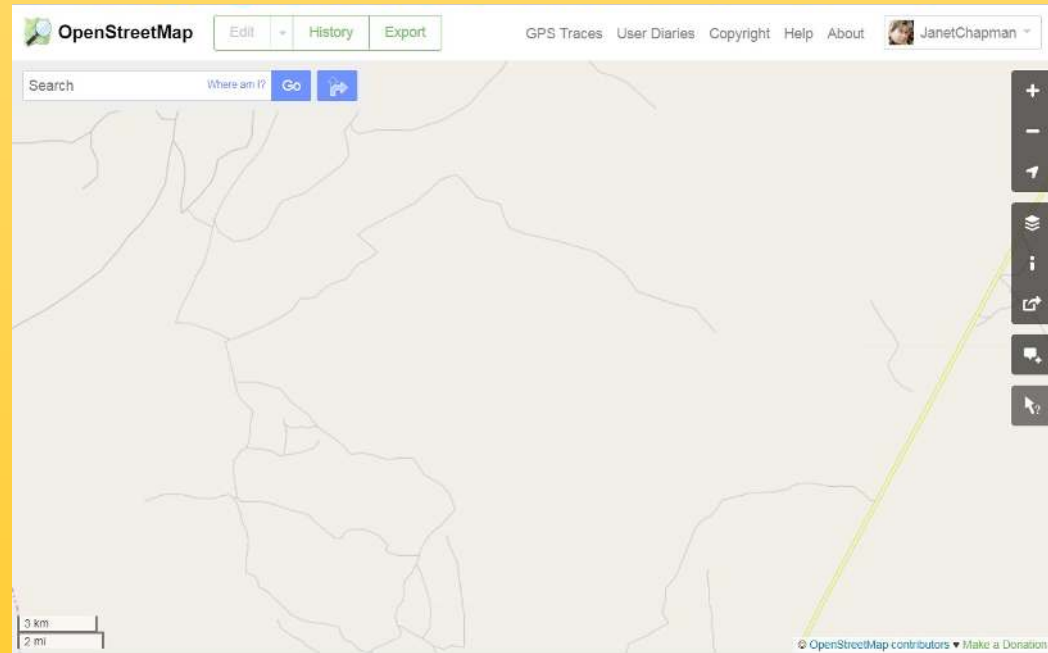
But girls cannot find the safehouses:



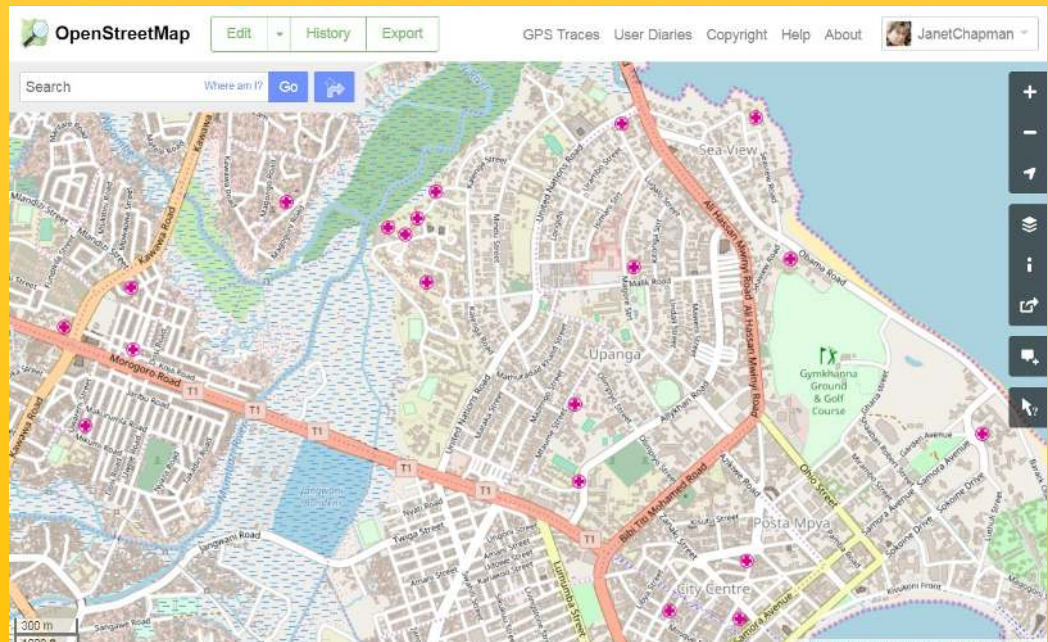
And safehouse staff cannot find them:



This is rural Tanzania:

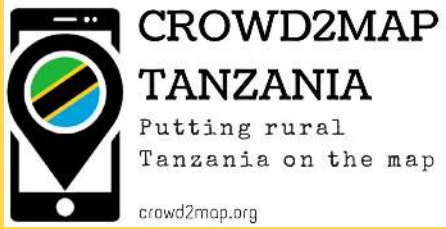


This is Dar es Salaam:



Girls
in rural Tanzania
need

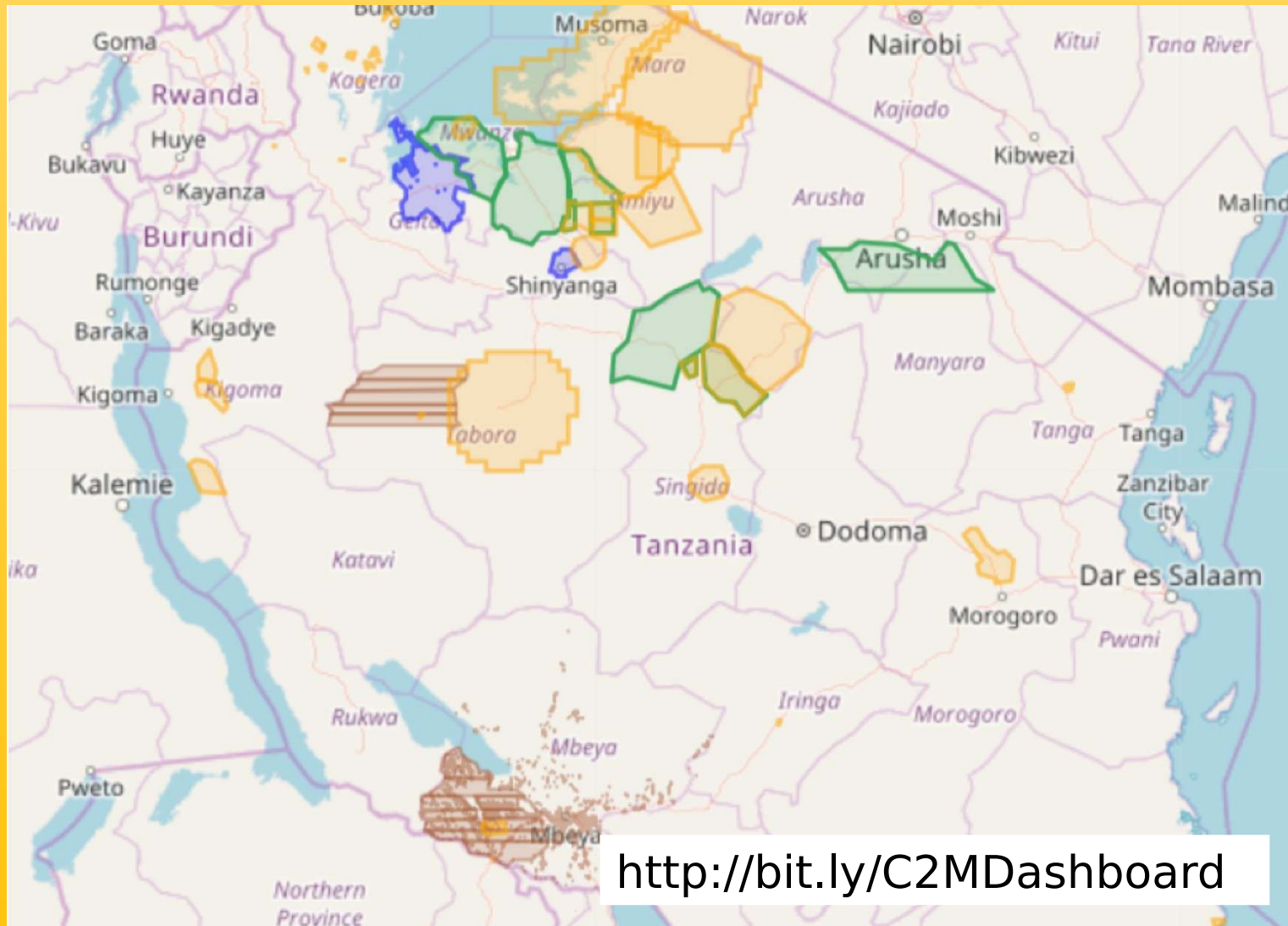
MAPS!



We are making them!



Where we've mapped so far:



<http://bit.ly/C2MDashboard>

How we map

RV = Remote
volunteers

LV = Local
volunteers

1. Set up a task on MapSwipe app to determine where the buildings are in the area to be mapped - remote volunteers RV
2. Create a task on HOTOSM Task Manager to map the areas with buildings - RV
3. Add names of buildings, villages etc using Maps.Me app - local volunteers
4. Validate and add any new buildings, names of roads, land use etc using printed FieldPapers - local volunteers - email to RV
5. Create PDFs of village maps using QGIS and email to

REMOTE MAPPERS VS COMMUNITY MAPPERS

Highly educated to degree level or beyond

Have used maps in their daily life since childhood

Own and can skilfully use a large range of technology



Many did not complete secondary school

Had never seen a map of their local area

Had never used a smartphone, or laptop or been online





Better maps have:

- helped 3000+ girls to find safehouses and avoid being cut
- coincided with a reduced FGM death rate of 75%



We have trained over 600 local mappers around 40% female



Mapping is a tool towards **greater gender equality** in Tanzania and we should support the disadvantaged and courageous community of rural female Tanzanian mappers.





OpenStreetMap



Humanitarian
OpenStreetMap
Team

Please join us!

j.chapman@tanzdevtrust.org

@crowd2map



CROWD2MAP

TANZANIA

Putting rural
Tanzania on the map

crowd2map.org



TANZANIA

Development Trust