



# State of the iD editor

#SOTM 2018

Bryan Housel

bryan@mapbox.com

@bhousel



Search or jump to...



Pull requests Issues Marketplace Explore



openstreetmap / ID

Unwatch 144

Unstar 1,657

Fork 658

Code

Issues 280

Pull requests 15

Projects 1

Wiki

Insights

Settings

Filters

is:issue is:open

Labels

Milestones

New issue

280 Open 3,565 Closed

Author

Labels

Projects

Milestones

Assignee

Sort

Editor: Height Tag Forced to Integer Value

#5184 opened 5 hours ago by bryantcurto

en-AU Localization localization

#5183 opened 10 hours ago by andrewharvey

Unable to create new note when using dev server bug

#5175 opened 2 days ago by Jam

Split roads in one click considering

#5174 opened 3 days ago by tordans

Notes: Filter / Only notes I contributed to considering

#5172 opened 3 days ago by tordans

Notes: Ignore notes or mark them as "#checklocally" wip

#5171 opened 3 days ago by tordans

Notes: Easier zoom in / out considering

#5169 opened 3 days ago by tordans

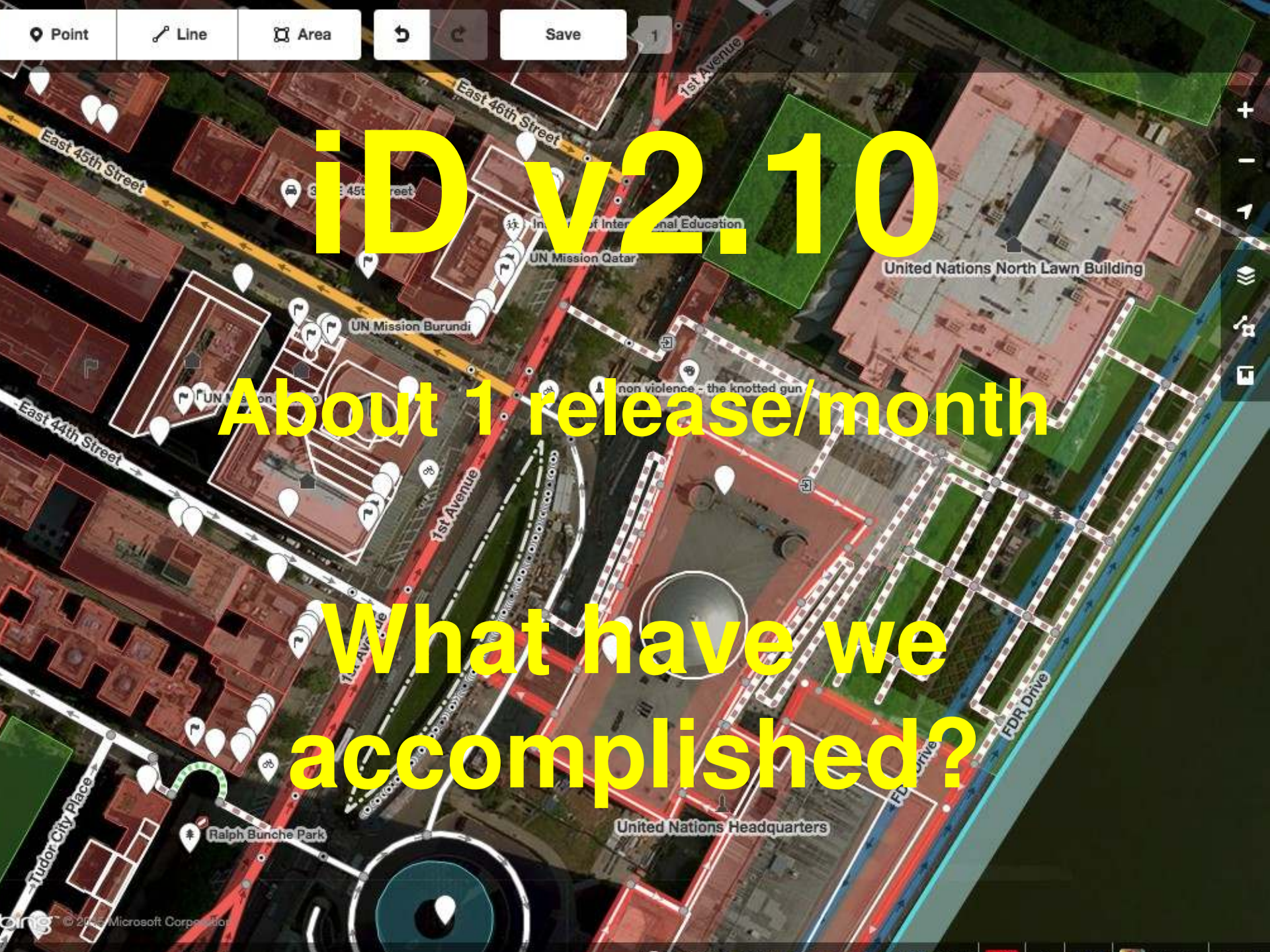
User confused by preset name suggestions considering

#5167 opened 3 days ago by tordans

Notes: View info about Notes in "Measurement" and "History" new-feature

#5158 opened 8 days ago by magol

Please help!



iD v2.10

About 1 release/month

What have we accomplished?

# Info Panels (⌘ ↑ + key)



## Measurement

w264656626

Geometry: closed area  
Area: 36845 ft<sup>2</sup> (0.85 ac)  
Perimeter: 833.5 ft  
Centroid: 40.7539589, -74.0004104

Imperial

## Location

40.7535141, -73.9999713  
Manhattan Community Board 4, New York County, New York City, New York, United States of America

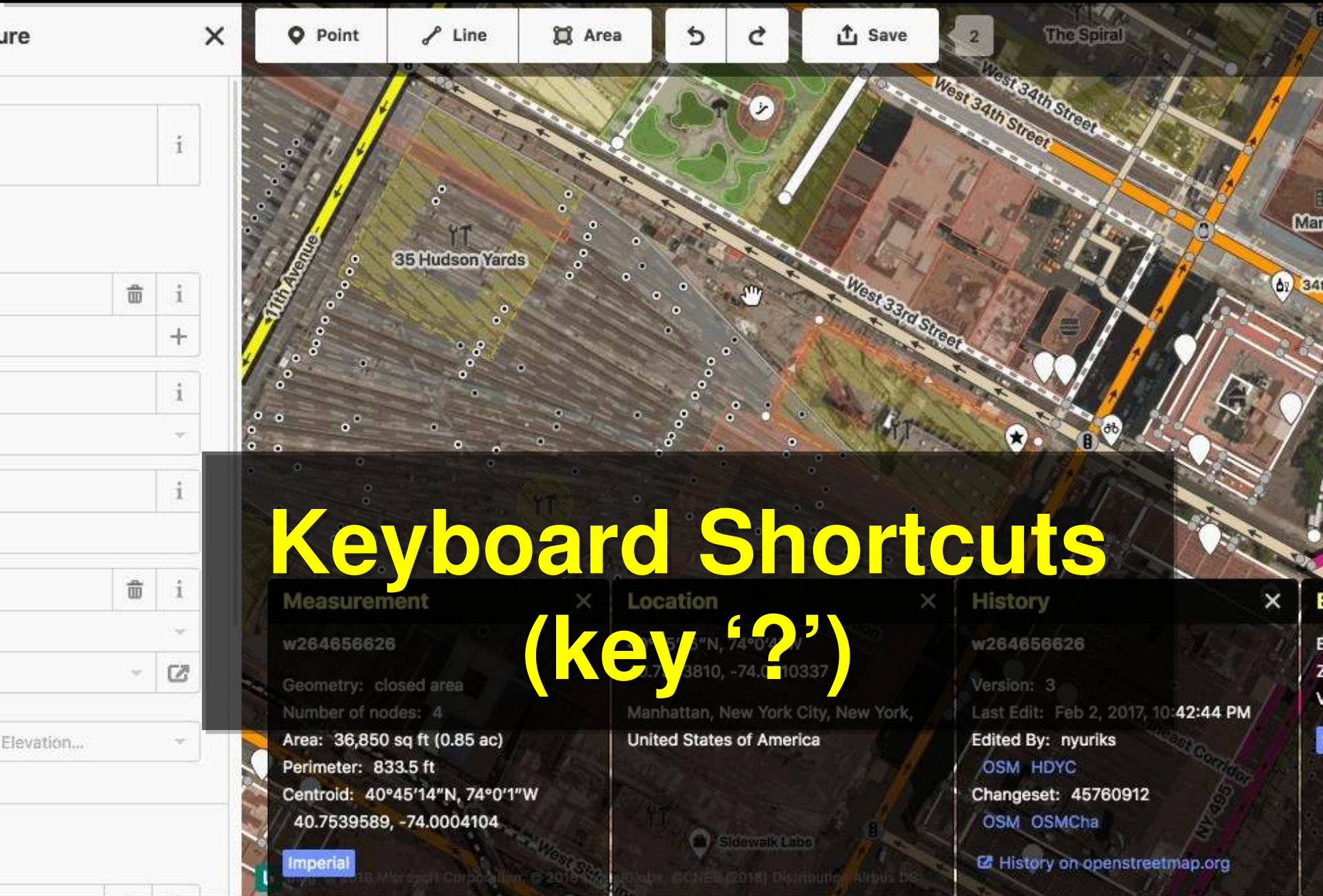
## History

w264656626  
Version: 3  
Last Edit: 2/2/2017, 4:42:44 PM  
Edited By: nyuriks  
[OSM](#) [HDYC](#)  
Changeset: 45760912  
[OSM](#) [OSMCha](#)  
[History on openstreetmap.org](#)

## Background

Bing aerial imagery  
Zoom: 18  
Vintage: 7/5/2014 - 8/9/2014

Show Tiles



Measure



Point

Line

Area



Save

2

The Spiral

11th Avenue

35 Hudson Yards

West 33rd Street

West 34th Street

Man

34

# Keyboard Shortcuts (key '?')

Measurement



Location



History



w264656626

Geometry: closed area

Number of nodes: 4

Area: 36,850 sq ft (0.85 ac)

Perimeter: 833.5 ft

Centroid: 40°45'14"N, 74°0'1"W

40.7539589, -74.0004104

Imperial

Manhattan, New York City, New York,  
United States of America

Sidewalk Labs

w264656626

Version: 3

Last Edit: Feb 2, 2017, 10:42:44 PM

Edited By: nyuriks

[OSM HDYC](#)

Changeset: 45760912

[OSM](#) [OSMCha](#)

[History on openstreetmap.org](#)

Elevation...

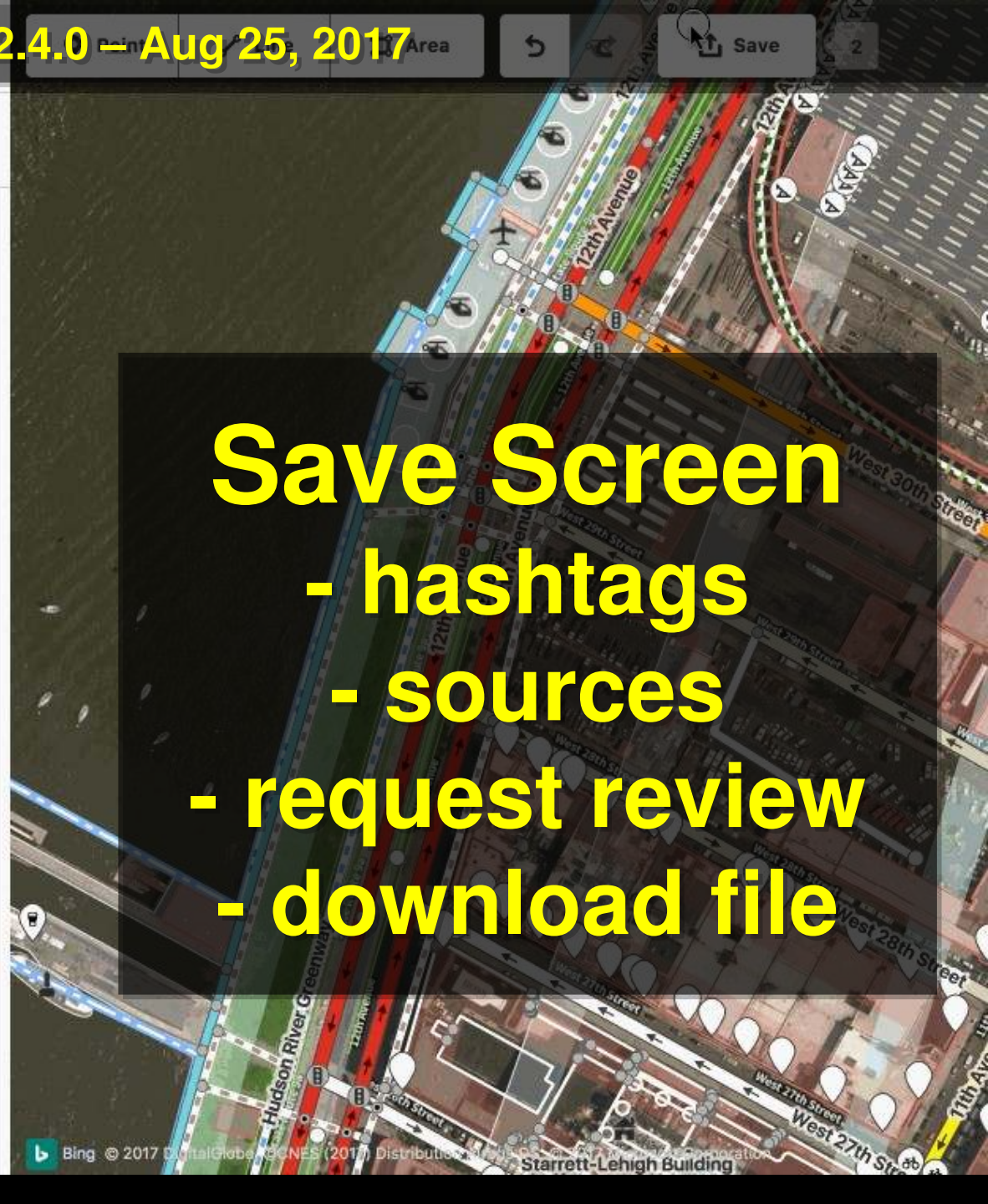
iD 2.3.2 – Jul 24, 2017

# Mapillary detections & capture date



Q Search

**Save Screen**  
- hashtags  
- sources  
- request review  
- download file

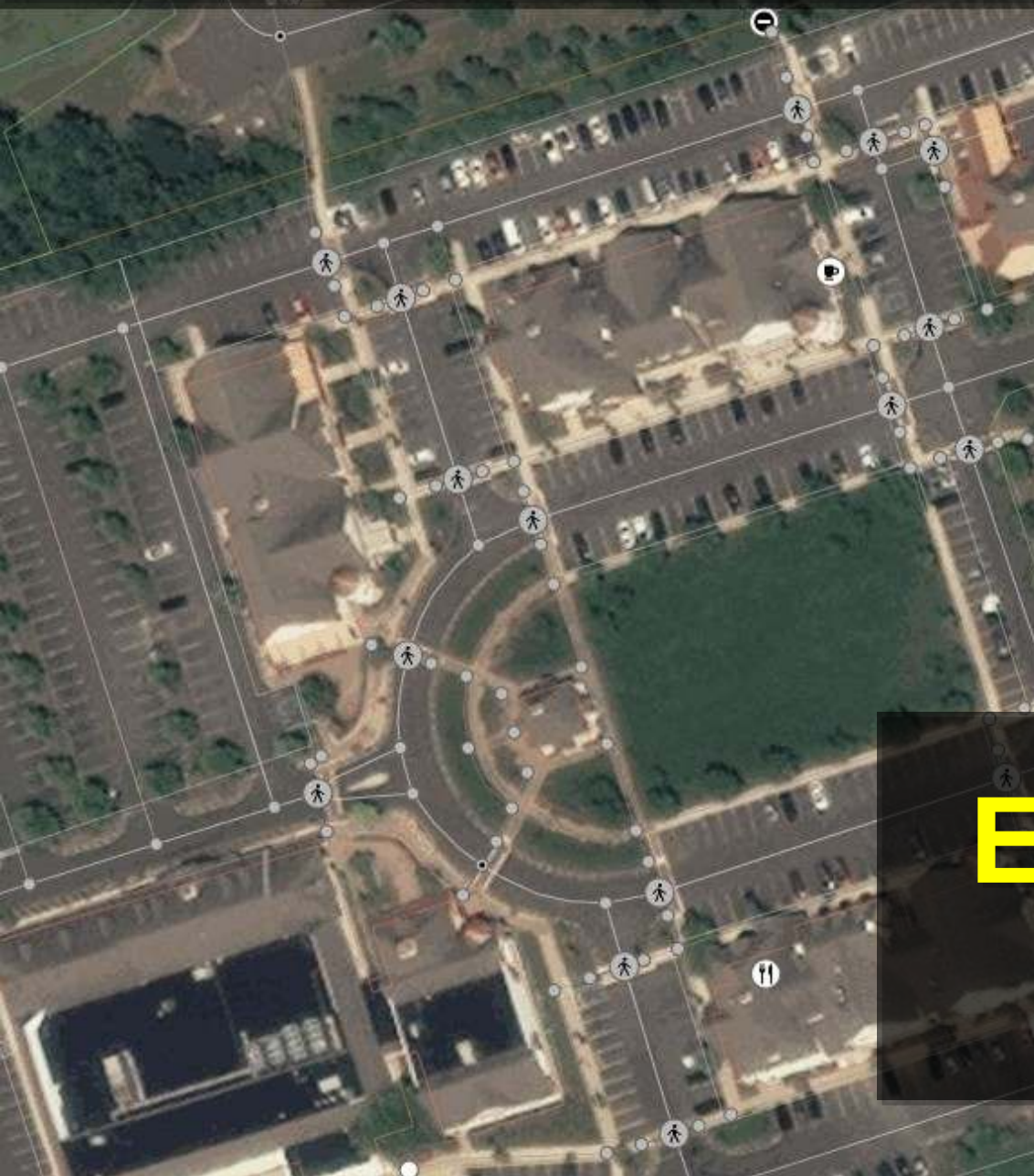


Point

Line

Area

iD 2.4.0 – Aug 25, 2017



## Background

### Backgrounds

- Bing aerial imagery
- DigitalGlobe Premium Imagery
- DigitalGlobe Standard Imagery
- Esri World Imagery
- Esri World Imagery (Clarity) Beta
- Mapbox Satellite
- OpenStreetMap
- Stamen
- NJ 2015 Aerial Imagery (Infrared)
- NJ 2015 Aerial Imagery (Natural Color)

Switch back to this background

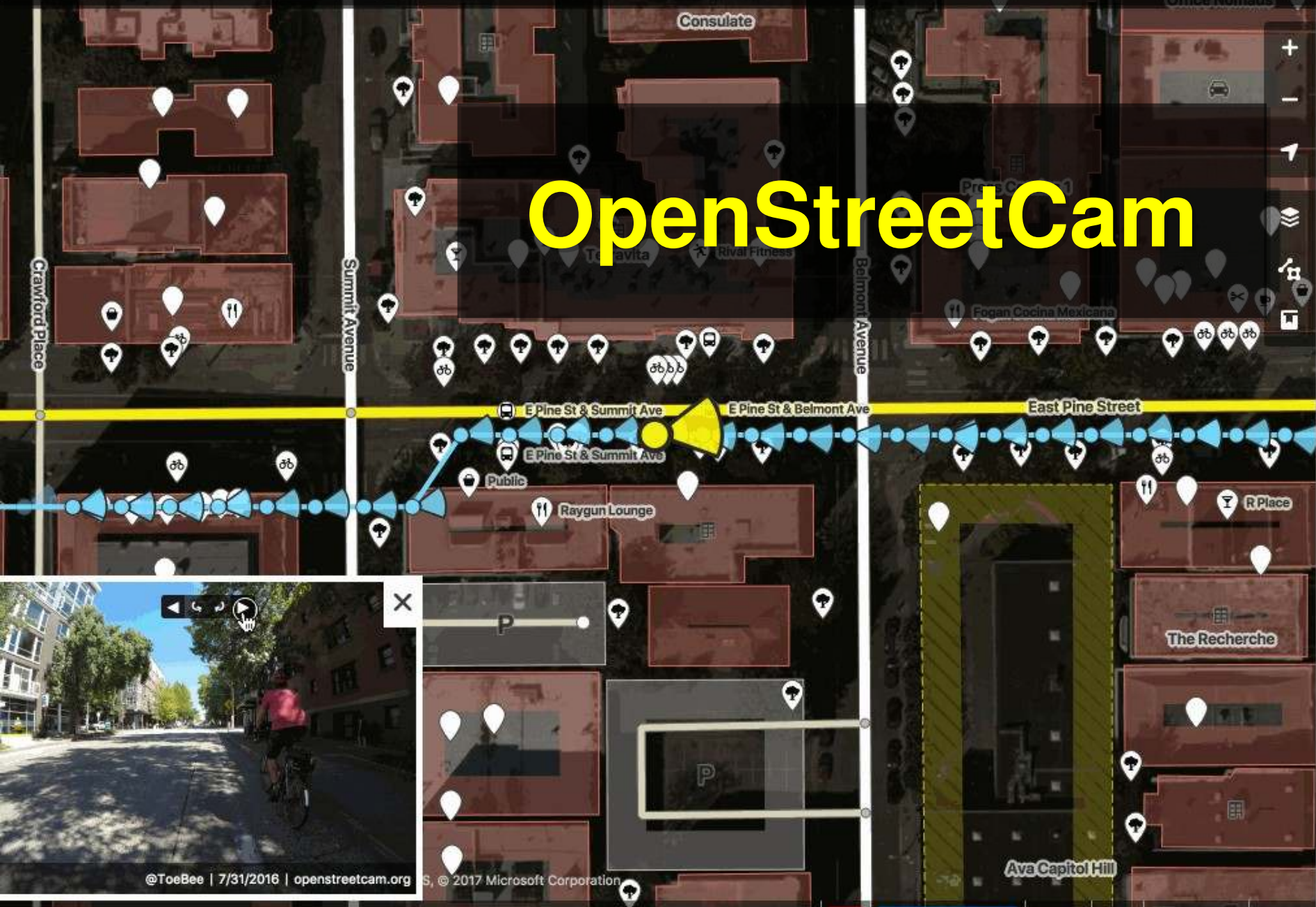
Shortcut: ⌘B

# Esri World Imagery

[Imagery Info / Report a Problem](#)



# OpenStreetCam



Point Line Area ↶ ↷ Save 2



## Background

> Overlays

▼ Display Options

Brightness 100%



Contrast 100%



Saturation 100%



Sharpness 105%



▼ Adjust imagery offset

Drag anywhere in the gray area below to adjust the imagery offset, or enter the offset values in meters.

# Imagery Adjustments

Q stopping



Bus Stopping Location

i



Tram Stopping Location

i



Ferry Stopping Location

i



Train Stopping Location

i



Subway Stopping Location

i



Monorail Stopping Location

i



Aerialway Stopping Location

i



Light Rail Stopping Location

i



Trolleybus Stopping Location

i

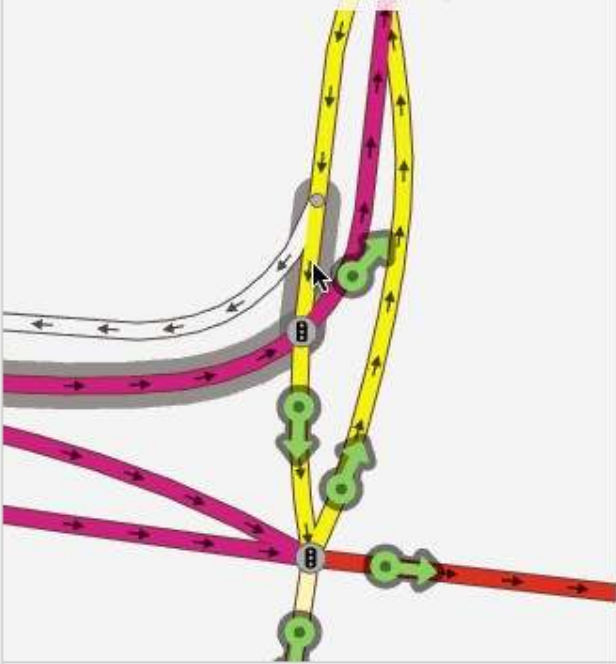


# PTv2 Public Transport Presets

**Edit feature** ✓

Direction i  
Forward, Backward, Both / All...

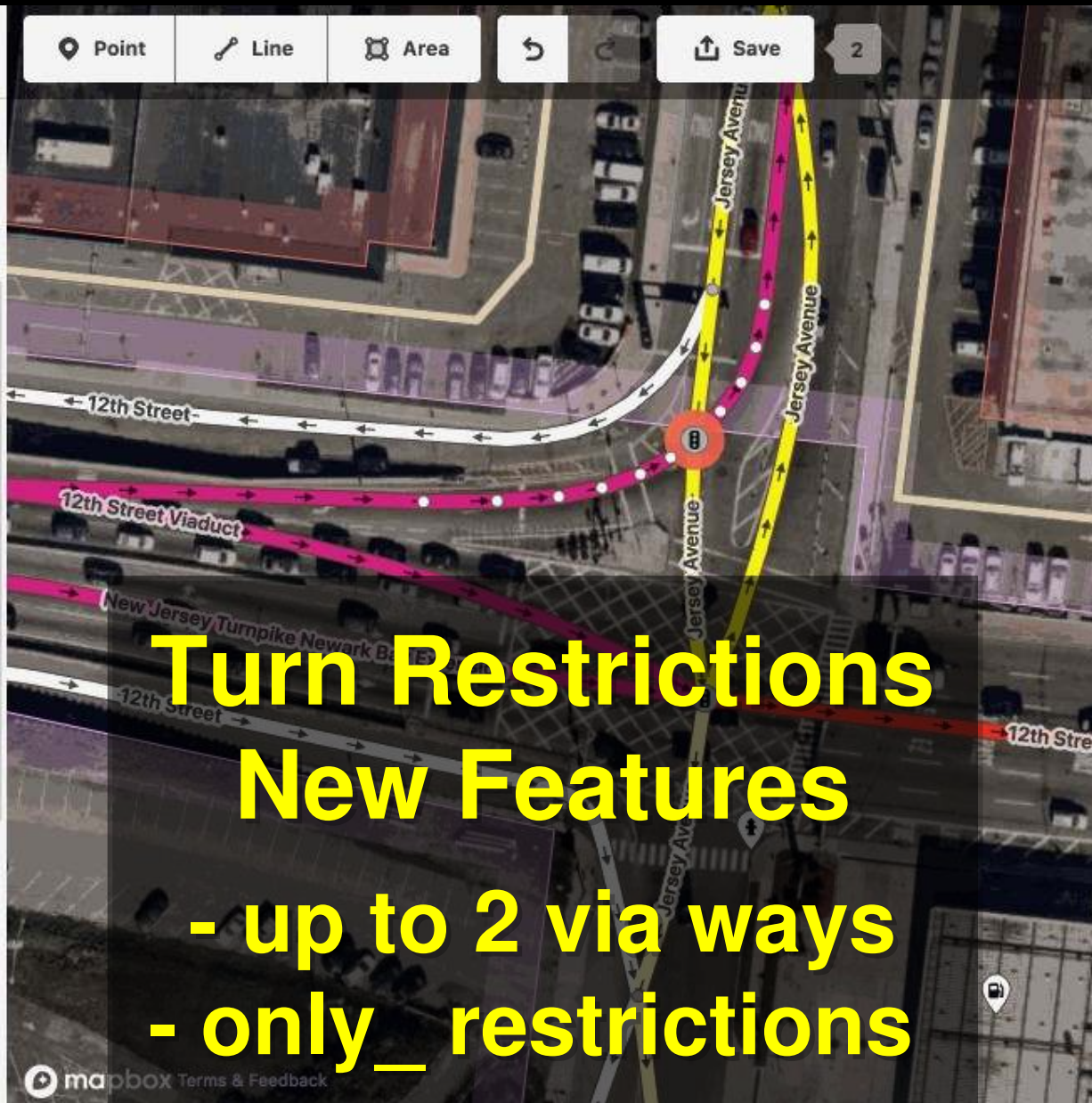
**Turn Restrictions** ? i  
Click to select **FROM** Motorway Link



Distance:  Up to 115 ft  
Via:  Up to 1 way

Add field: Address, Description, Elevation...

Point Line Area ↶ ↷ Save 2



**Turn Restrictions  
New Features**  
- up to 2 via ways  
- only\_restrictions

mapbox Terms & Feedback

You just edited OpenStreetMap! ✕

Thank you for improving the map around Long Hill Township, New Jersey.

Your changes should appear on OpenStreetMap within a few minutes. It may take longer for maps elsewhere to receive updates. [Details](#)



[View Changes on OSM](#)

Your changeset #: 61153798

Like OpenStreetMap? Connect with others:



[OpenStreetMap NYC](#)

Mappers and OpenStreetMap users, developers and enthusiasts in the New York Metropolitan area

[> More](#)



[OpenStreetMap US Slack](#)

All are welcome! Sign up at <https://osmus-slack.herokuapp.com/>

[> More](#)



[OpenStreetMap US](#)

We help grow and improve OpenStreetMap in the United States.

[> More](#)

[> Events](#) 1



[OpenStreetMap on Facebook](#)

Like us on Facebook for news and updates about

Point

Line

Area



Save

# Community Index

Point

Line

Area

iD 2.9.0 – Jun 14, 2018

# Bing Streetside



©2018 Microsoft | Aug 30, 2014  
[Report a privacy concern with this image](#)

INES (2018) Distribution Airbus DS

## Edit note



Note 131946



[lxbarth\\_nycbuildings](#)

opened Mar 9, 2014

Is this a site of a building or not? Original NYC data says here is a building.

### New Comment

Enter a comment to share with other users.

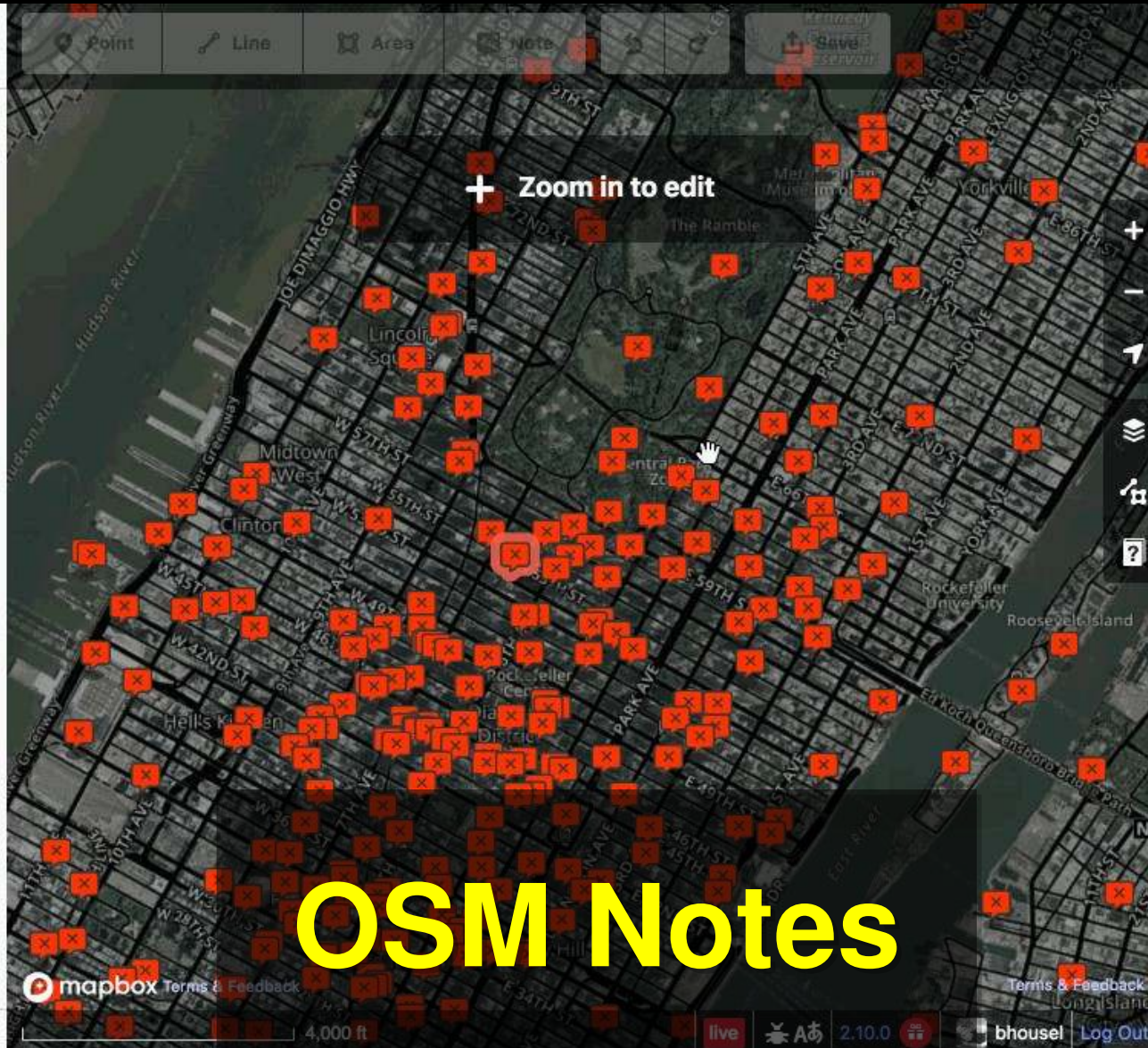
Your comments as [bhouse1](#) will be publicly visible to all OpenStreetMap users.

Close Note

Comment

[View on openstreetmap.org](#)

[Report](#)



# OSM Notes

Edit feature





Point

Line

Area

Save

 **Bollard** 

All fields

Allowed Access		
Motorcycles	yes	
Motor Vehicles	Not Specified	
Bicycles	Not Specified	
Trucks	Not Specified	

Field:

All tags (1)

Carrier  bollard   

+

View on [openstreetmap.org](http://openstreetmap.org)

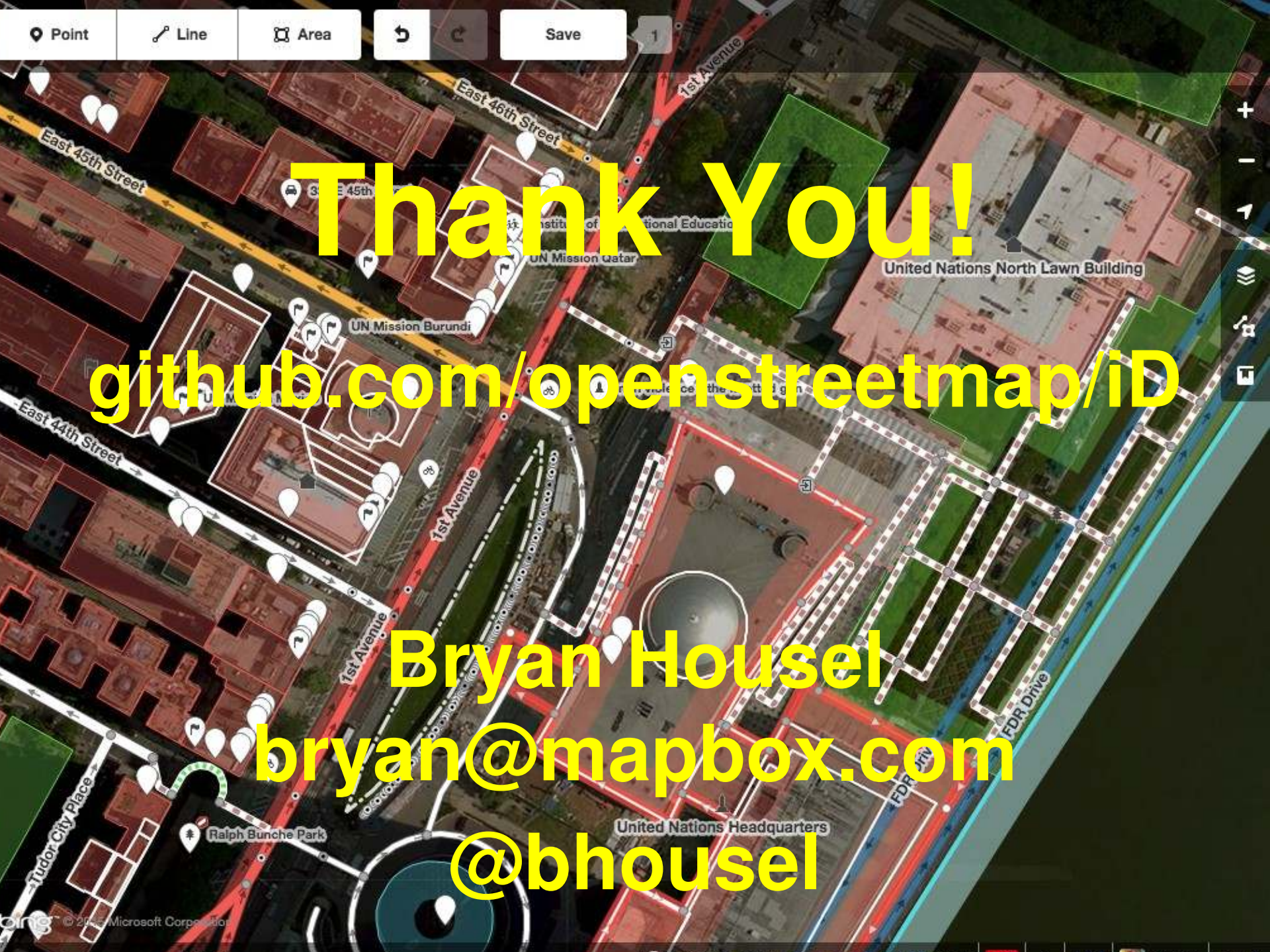


**Detach Node**  
**(key 'E')**



# Resizable Photo Viewer





**Thank You!**

**[github.com/openstreetmap/iD](https://github.com/openstreetmap/iD)**

**Bryan Housel**

**[bryan@mapbox.com](mailto:bryan@mapbox.com)**

**[@bhousel](#)**